

powered by  
intelligent.  
partnership \*

# BR SHOWCASE

---

MAY 2019

# Intelligent Partnership is the UK's leading provider of education and insights on alternative investments.

We deliver accredited research, training and events to a community of financial services and investment professionals. IFAs and Wealth Managers make up the majority of our 5000+ subscribers, all of whom are interested or active in alternative investments.

Our aim is to increase awareness and engagement amongst intermediaries, providing them with the tools and information they need to speak knowledgeably with their clients about the whole investment universe.

Our educational content is delivered using digital and printed reports, via video and through live events - these are accredited for Continuing Professional

Development (CPD) by the Chartered Insurance Institute (CII), Chartered Institute of Securities and Investment (CISI) and Personal Finance Society (PFS).

We also keep over 12,000 subscribers up to date with the latest news and developments in alternative investments via our Briefing and Spotlight email services, and we run showcase events where investment providers can present to, and meet with, intermediaries.

We are building a future where alternative investments are as understandable and accessible as mainstream assets; if we can do that we will create a much more open and efficient market for everyone.

**Bristol**  
Tuesday 30 April

**Birmingham**  
Wednesday 1 May

**London**  
Tuesday 7 May

**Yorkshire**  
Wednesday 8 May

**Newmarket**  
Thursday 9 May

**Exeter**  
Wednesday 15 May

**Lancashire**  
Thursday 16 May

**Leicester**  
Tuesday 21 May

# THANK YOU

## TO ALL OF OUR PARTICIPATING INVESTMENT PROVIDERS

**BERINGEA**



**Foresight**  
group

**INGENIOUS**



# SCHEDULE OF THE MORNING

## BIRMINGHAM, LANCASHIRE, LEICESTER, LONDON, NEWMARKET & YORKSHIRE

8.30 **Registration** 

9.00 **Opening Remarks**

The event will kick off with the event host setting the scene and letting you know how the morning is going to shape up. We'll also have a live draw to determine the order of the Investment Provider's presentations

9.05 **Investment Provider Elevator Pitches**

9.35 **Investment Provider Presentations (I)**

Getting down to the brass tacks - the first few in-depth presentations from the Providers, outlining the unique selling points of their product as well as covering key metrics such as costs, target returns and track record

10.40 **Coffee break** 

11.05 **Investment Provider Presentations (II)**

The second group of Investment Providers deliver their in-depth presentations on their product offering

12.10 **Q&A** 

We'll put your questions to all of the Investment Providers present at the event

12.30 **Lunch**

Buffet lunch, coffee, tea, and more networking with the Investment Providers

## EXETER & BRISTOL

9.00 **Registration** 

9.30 **Opening Remarks**

The event will kick off with the event host setting the scene and letting you know how the morning is going to shape up. We'll also have a live draw to determine the order of the Investment Provider's presentations

9.35 **Investment Provider Elevator Pitches**

10.00 **Investment Provider Presentations (I)**

Getting down to the brass tacks - the first few in-depth presentations from the Providers, outlining the unique selling points of their product as well as covering key metrics such as costs, target returns and track record

10.45 **Coffee break** 

11.10 **Investment Provider Presentations (II)**

The second group of Investment Providers deliver their in-depth presentations on their product offering

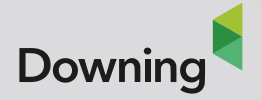
12.00 **Q&A** 

We'll put your questions to all of the Investment Providers present at the event

12.25 **Lunch**

Buffet lunch, coffee, tea, and more networking with the Investment Providers







**Foresight**  
group



**INGENIOUS**





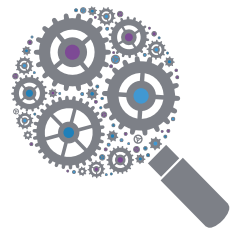
# THANK YOU

## FOR ATTENDING THIS SHOWCASE

Here at **Intelligent Partnership** we organise a number of Showcase events for advisers throughout the year:

<b>VCT</b>	January
<b>Alt-Fi</b>	February
<b>BR</b>	May
<b>AIM</b>	September
<b>EIS</b>	November

# Notes



For more information visit: [intelligent-partnership.com](https://intelligent-partnership.com)





## You're on the road to mastery...

Engage with our entire programme of reports, education, events and weekly e-mails to keep up to date and feel confident about the whole investment universe.